

SDC PPN Linkage Groups

Community, Enterprise, Tourism, Sports & Arts
Climate Action, Environment, Transport and Planning
Social Inclusion, Housing and Equality



Agenda

07.15pm Welcome and introductions

07.35pm Overview of Linkage Groups

- What are they, what do they do, how do they do it and what are the plans for 2026.

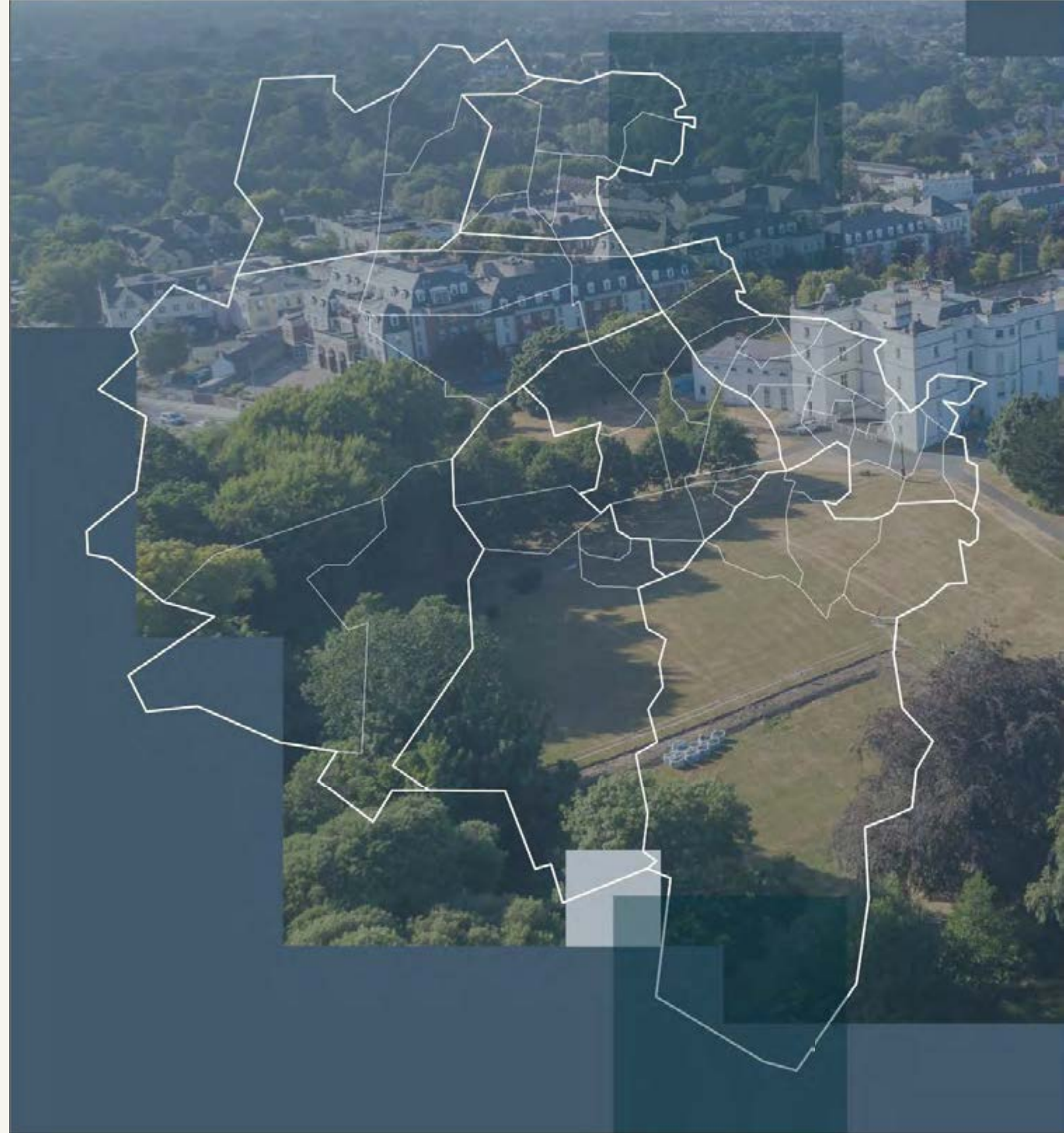
08.05pm Shaping the future agenda

08.30pm Close

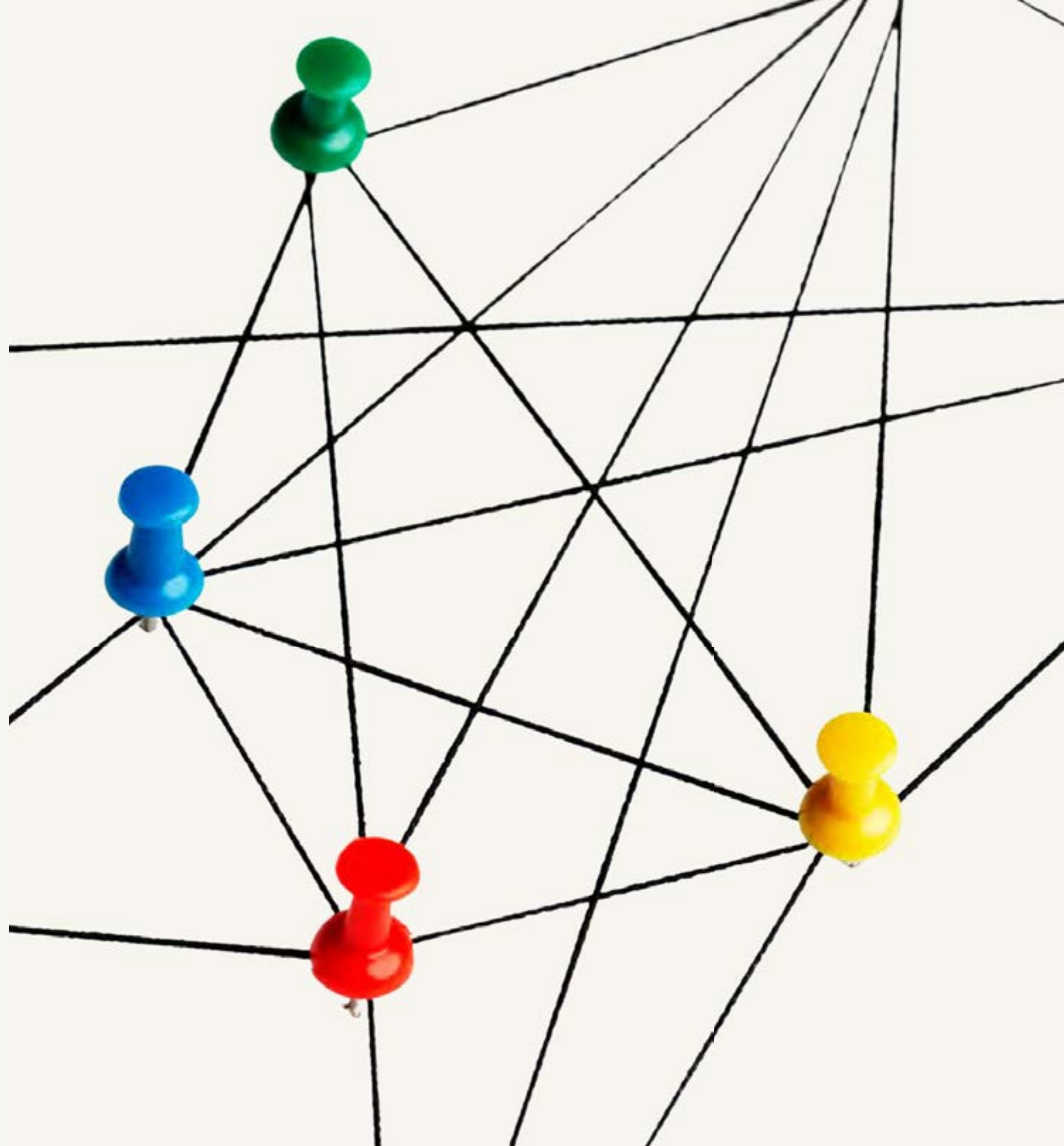


Introductions

- Your name
- What organisation(s) you are part of
- Your role in the PPN (if any)
- Why you are here



**What are
Linkage
Groups?**



We all want to create a better community.

Our county is filled with passionate groups working on the ground. But when dealing with official bodies, it can be hard to make our individual voices heard.

How do we turn separate conversations into a unified, powerful message?



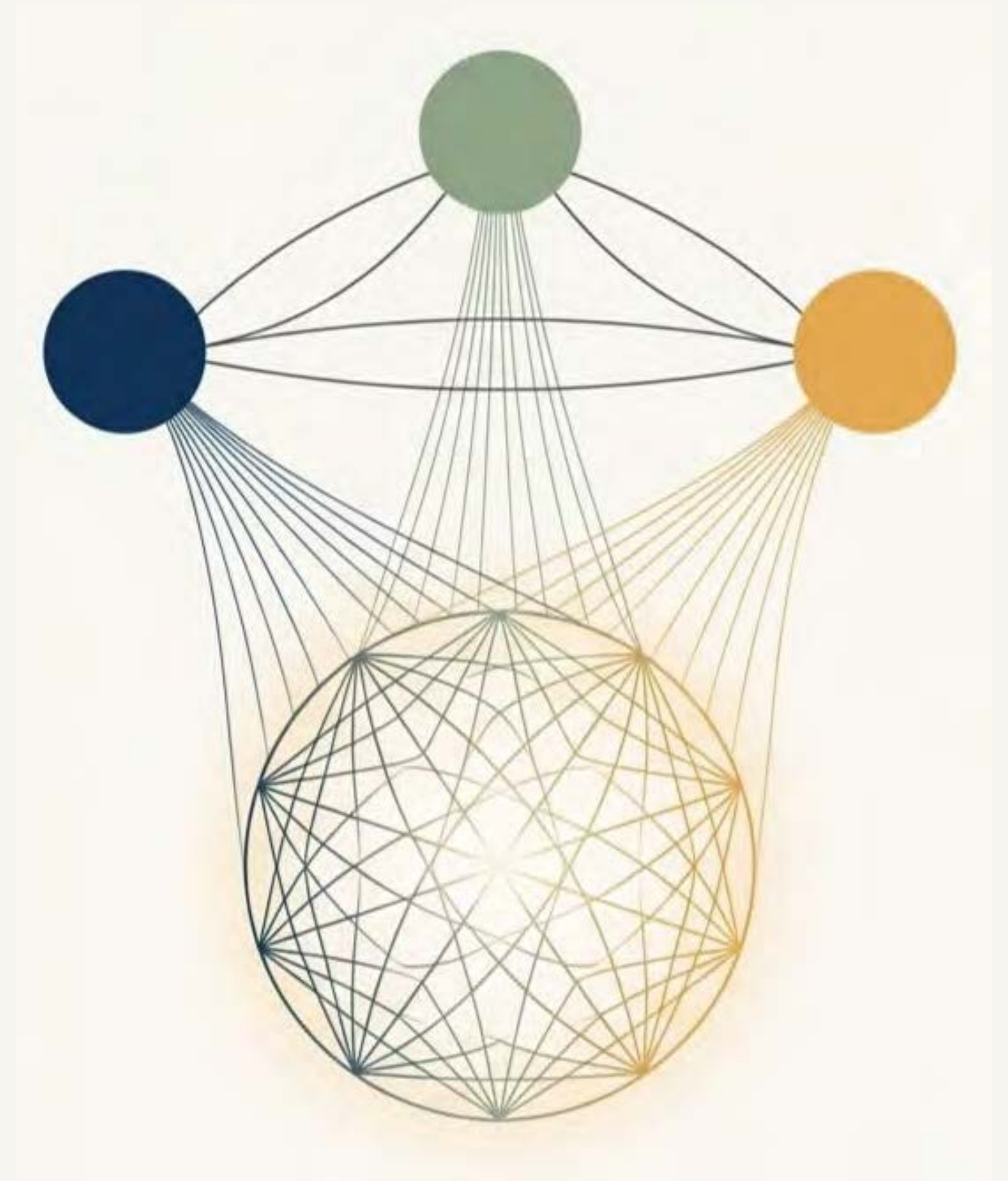
The PPN connects our strengths.

The Public Participation Network (PPN) is the structure that brings our community's voices together. It is built on three pillars, or 'Colleges', that represent the diverse interests of our member groups:

 Community and Voluntary

 Social Inclusion

 Environment



Linkage Groups are the engine of the PPN.

The PPN is the network, Linkage Groups are where the action happen.

They are:

- Thematic groups of like-minded members.
- The main way the PPN advocates for change.



Where do Linkage Groups 'fit' within the PPN?

Linkage Groups are the bridge between all PPN members (the Plenary) and the bodies that make decisions affecting our communities.



What do Linkage Groups help you do?



CONNECT

Bring together members groups with a shared interest in a specific area to discuss views and concerns.



COLLABORATE

Develop shared policy positions, research, and proposals on issues that matter to your community.



CREATE CHANGE

Directly influence policy and decision-making by acting as a powerful, collective voice.

What do Linkage Groups do?



1. SHAPE POLICY

Input directly on important local policies and strategies such as the County Development Plan, Climate Action Plan, Tree Management Plans, and so on.



2. ENGAGE PUBLIC BODIES

Directly influence policy and decision-making by acting as a powerful, collective voice.



3. SET THE COMMUNITY AGENDA

Develop an issue paper, community manifesto, submit motions and respond to public consultations.



4. ARRANGE REPRESENTATION

Directly influence policy and decision-making by acting as a powerful, collective voice.

What do Linkage Groups do?

RESEARCH

CAMPAIGNS

SEMINARS

TRAINING

Influence beyond the Council.

The Linkage Group's advocacy is not limited to South Dublin County Council. You will engage with a wide range of public service bodies and state agencies to shape a range of services that affect everyone.



PPN Representatives: Your voice at the table

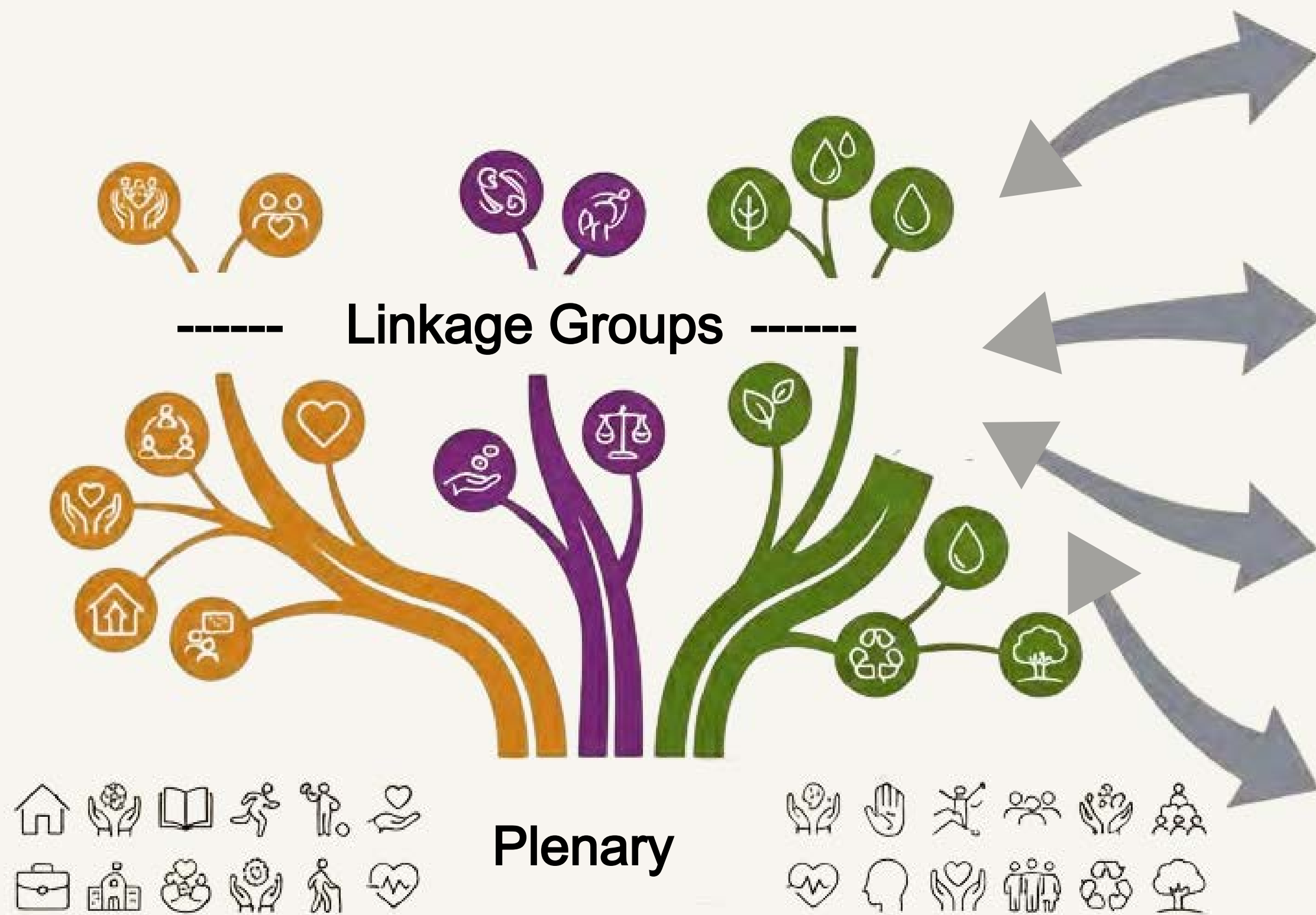
Linkage Groups select PPN Representatives to sit on County Council committees to bring forward the Linkage Groups views.

They:

- **Represent** the agreed views and diversity of opinions from the Linkage Group.
- **Bring forward** issues and agenda items.
- **Report back** clearly on committee discussions and outcomes.



PPN Representatives



PPN Reps



Linkage Group Facilitator

The Linkage Group Facilitator manages meetings and the workplan for the group.

The Facilitator guides the group without taking over.

The Facilitator is nominated for 3 years, acts as liaison between PPN Staff and the group, and reports back to the Plenary.

Full training is provided.



What are the 3 Linkage Groups for South Dublin?

**Arts, Community,
Enterprise,
Tourism and
Sport**

**Climate Action,
Environment,
Planning and
Transport**

**Social Inclusion,
Housing and
Equality**



The Economy

Jobs and Skills

More??

Arts Plan

Libraries

Heritage Plan

Arts, Community, Enterprise, Tourism and Sports

Playgrounds

Sports Facilities

Grants

Healthy Community

Community Response

Cultural Commemoration

Shaping the future agenda.

What would you like this group to achieve?



This is a Member driven process.

The strength and direction of a Linkage Group
come from you.

YOU discuss the issues.

YOU develop the policy positions.

YOU provide the mandate for the PPN Rep.

YOU drive the action.

YOU hold the process to account.

What are we planning for 2026?

1

1st Meeting: January 2026

Introduction to and overview of your Linkage Group.

Exploring ways of working and looking forward to future agenda.

2

2nd Meeting: April 2026

Planning the work of your Linkage Group.

Organising your ways of working, facilitation and representative roles.

May PPN Plenary Meeting: Joint Meeting of Linkage Groups and PPN Rep Elections

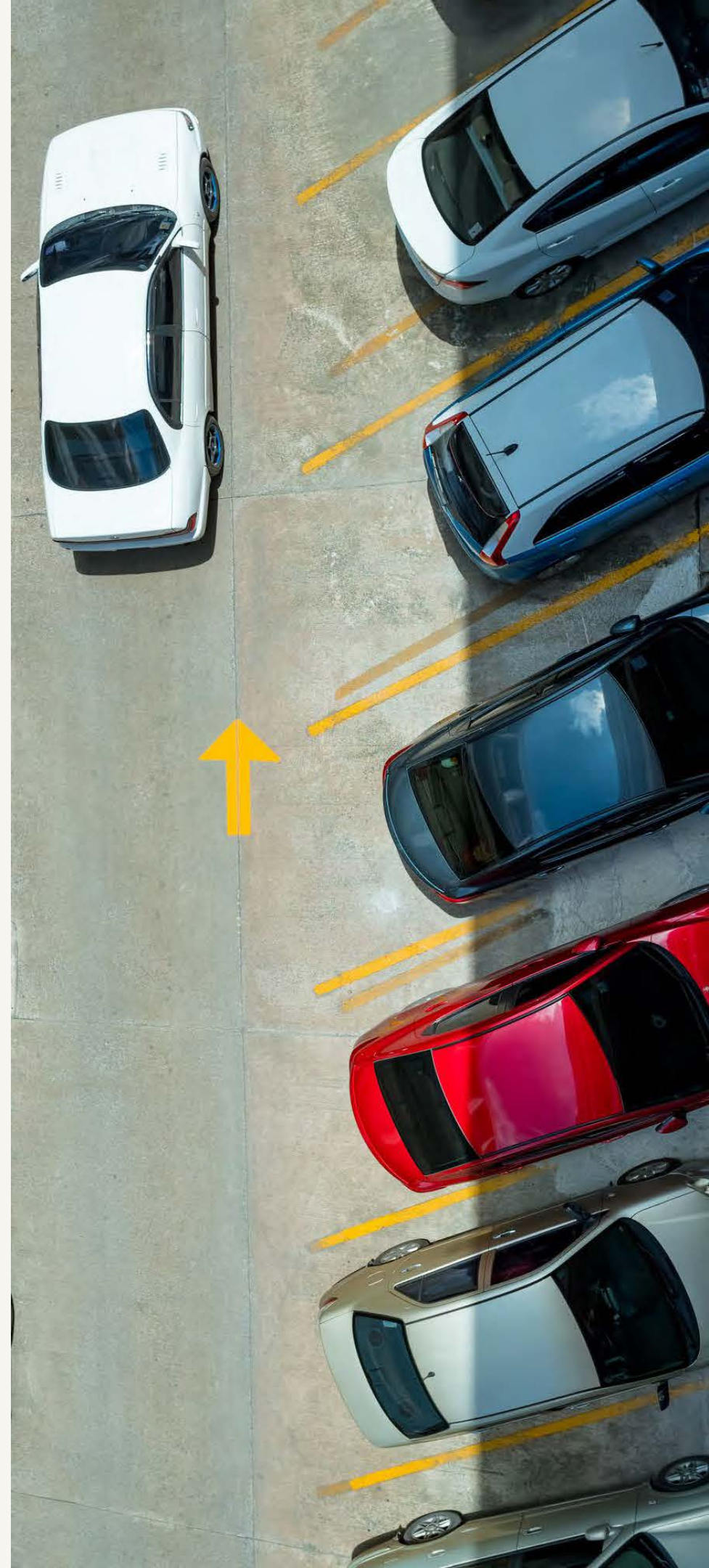
3

3rd Meeting: September 2026

Hand-over to members.

Taking action

Car park



Round up and close

